



**RAYSTAR**  
**Smart Display USB2CAN**

**User**  **Guide**

## Table of Contents

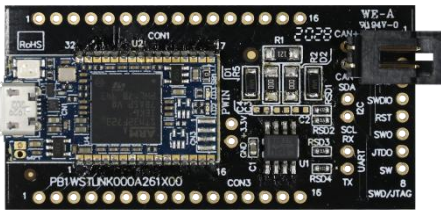
1	Steps for Usage .....	4
1.1	Plug short USB cables to Connection Board .....	4
1.2	Connect to Smart Display .....	4
1.3	Connect to USB2CAN .....	5
1.4	Plug the "USB to MicroUSB Cable" to USB2CAN module pin housing. ....	5
1.5	Plug the USB header to PC USB socket .....	5
1.6	Power On .....	5
1.7	Start the Smart Display .....	6
2	Software for usage .....	7
2.1	Unzip the zip .....	7
2.2	Install the Driver .....	7
2.3	Click the next button .....	7
2.4	Waiting for the driver install.....	8
2.5	Choose the install button to install STMicroelectronics.....	8
2.6	Choose the install button to install STMicroelectronics COM port.....	8
2.7	Completing the Driver installation wizard.....	9
2.8	Installing control APP for PC that executes the 『RaystarSmartDisplaySetup.vx.x.x.msi』 .....	9
2.9	Choose the Next button to next install step.....	9
2.10	Choose the Next button used the default installation folder. ....	10
2.11	Installation Complete. ....	10
2.12	Then you can see the APP execution file on your desktop. ....	11
3	Operating the APP .....	12

---

## Preface

---

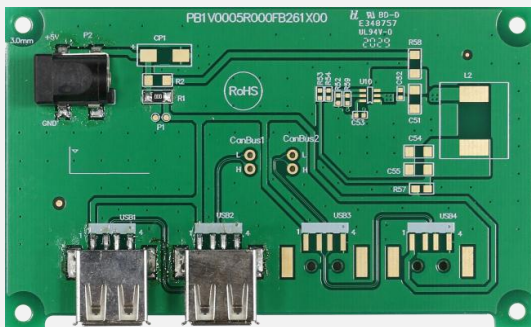
Thank you for purchasing 5" CanTFT Smart Display. Please checkup stuffs as checking list in the below picture when get delivery demo.set package. Please scan QR-code of splash screen to get the specification sheet.



**USB2CAN Dongle**



**5" Smart Display**



**Connection Board**



**USB short Cable to smart display**

**USB short Cable to Host**



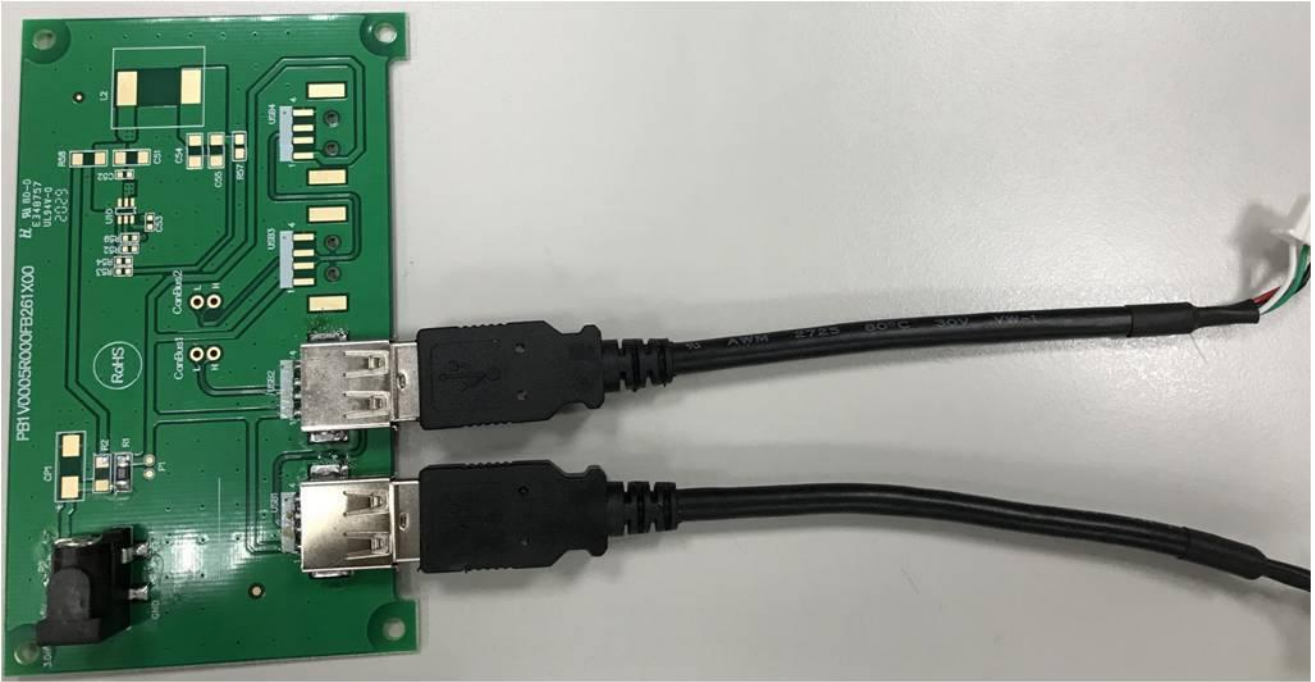
**USB to MicroUSB Cable**

Smart Display Demo set checking list :

1. Preface printing x 1.
2. Smart Display x 1
3. Connection Board x 1
4. USB2CAN Dongle x 1
5. USB to MicroUSB Cable x 1
6. USB short Cable to smart display x 1
7. USB short Cable to Host x 1

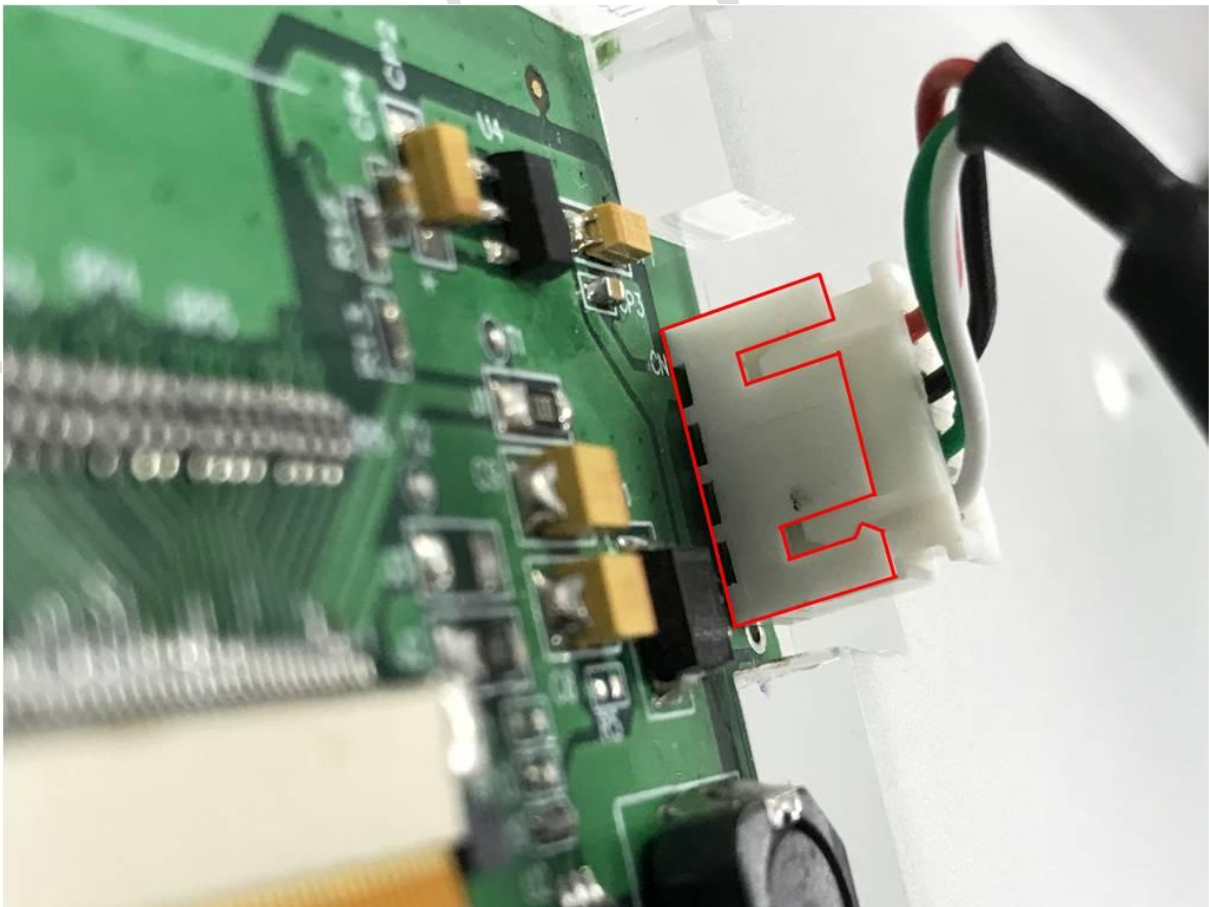
## 1 Steps for Usage

### 1.1 Plug short USB cables to Connection Board



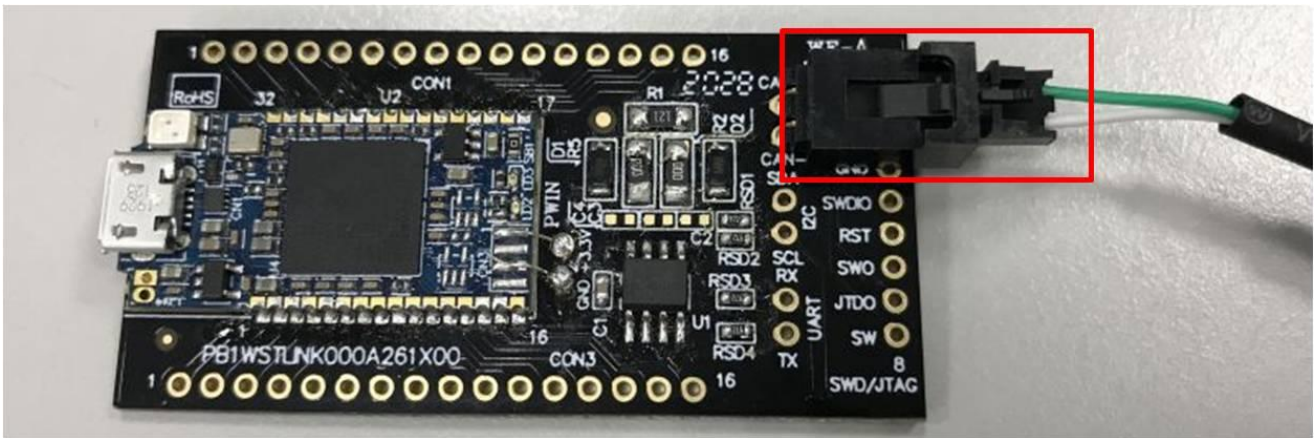
### 1.2 Connect to Smart Display

Plug the "USB short cable to smart display" to Smart Display pin housing. This pin has a foolproof socket showing the below photo.

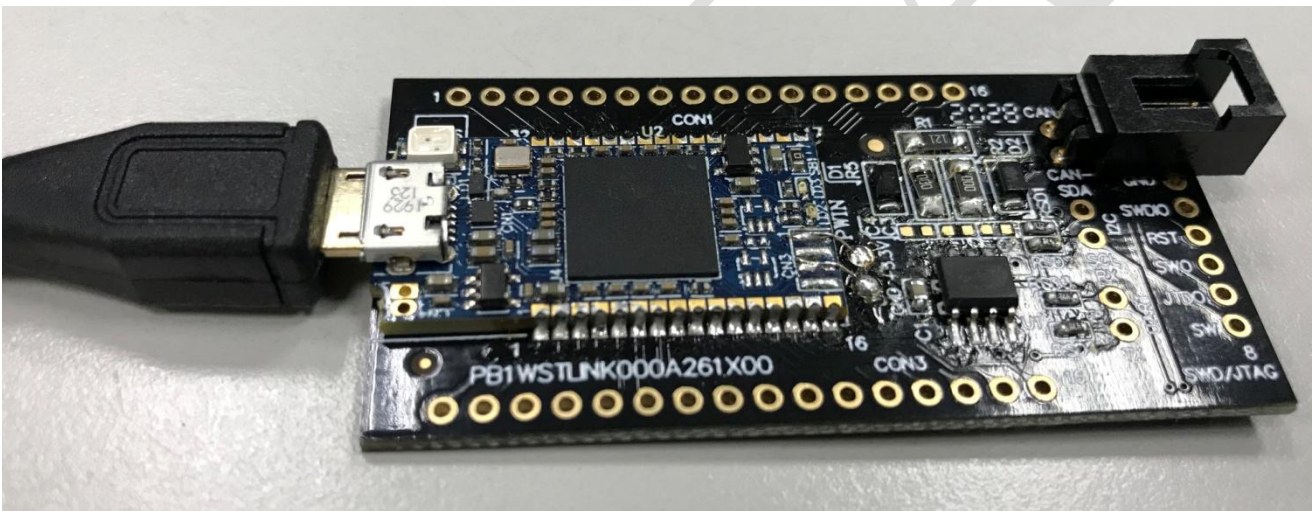


1.3 Connect to USB2CAN

Plug the "USB short Cable to Host" to USB2CAN module pin housing. This pin has a foolproof socket showing the below photo.



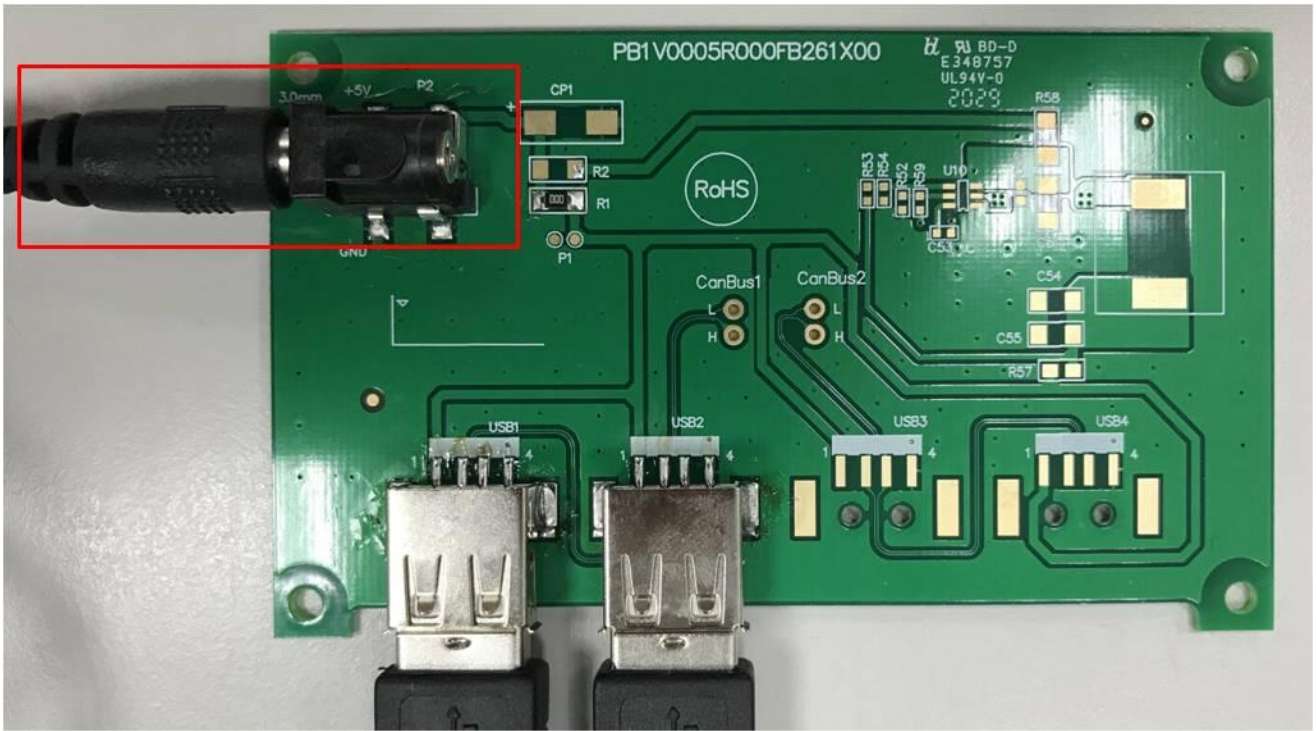
1.4 Plug the "USB to MicroUSB Cable" to USB2CAN module pin housing.



1.5 Plug the USB header to PC USB socket

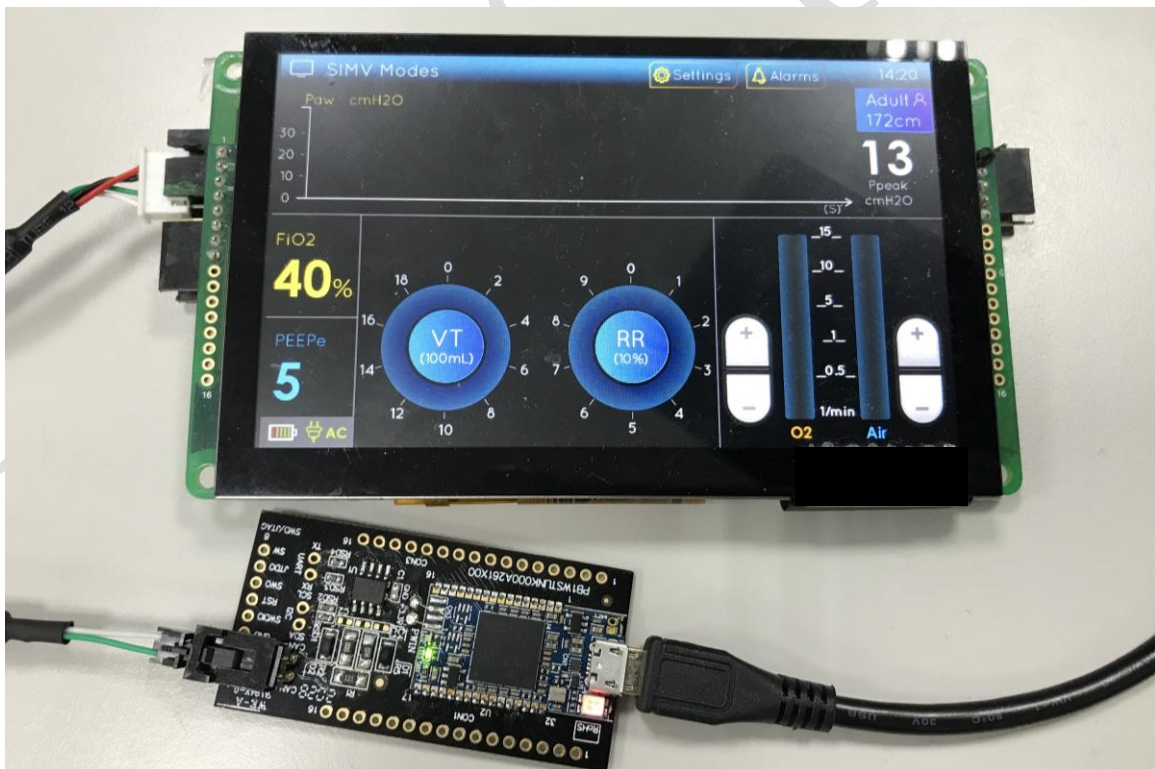
1.6 Power On

Connect the power line to POWER JACK. (PLUG 5.5mm x 2.1mm)(5V/3A) Positive pole of the power supply is internal.



### 1.7 Start the Smart Display

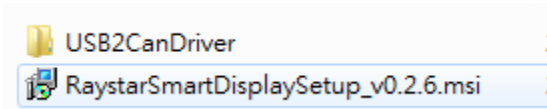
In the below photo you can see the current scenario when you power on.



## 2 Software for usage

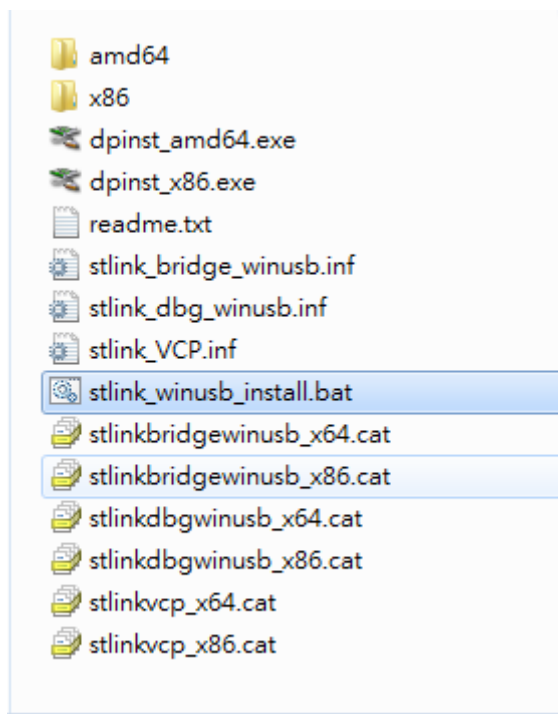
### 2.1 Unzip the zip

You can see the folder have two files like the below photo.  
(The file version according to current the latest version)

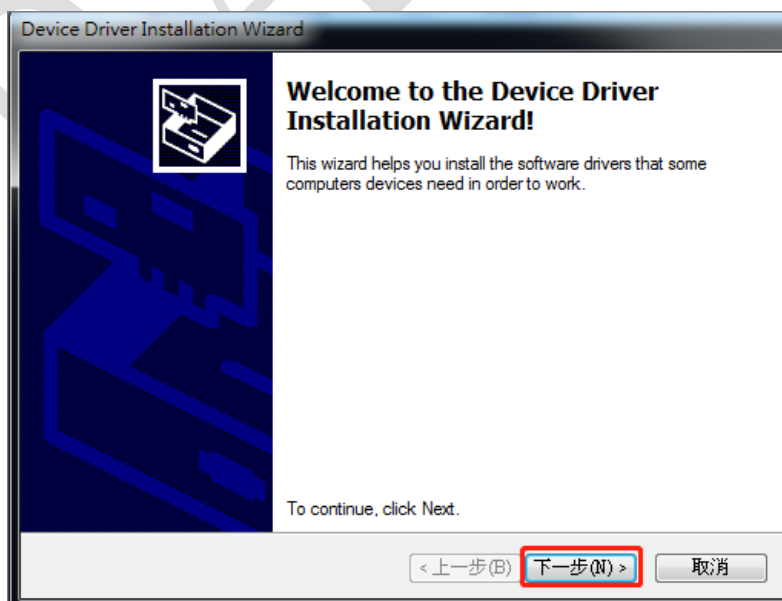


### 2.2 Install the Driver

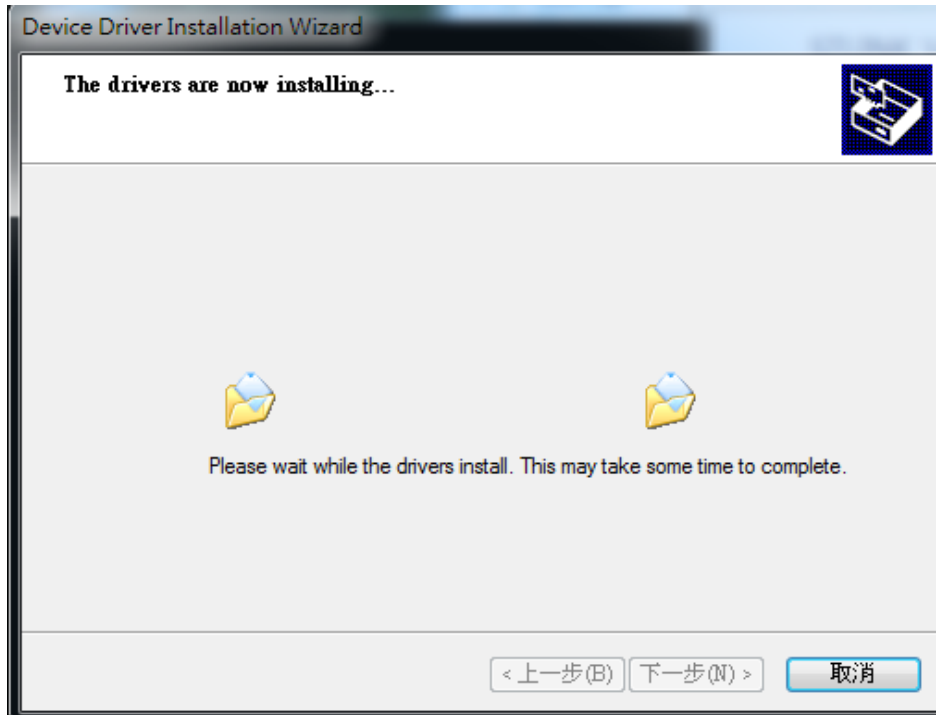
Now enter the 『USB2CanDriver』 folder, the below photo, you can see these files.  
Executing the 『stlink\_winusb\_install.bat』 file to install driver.



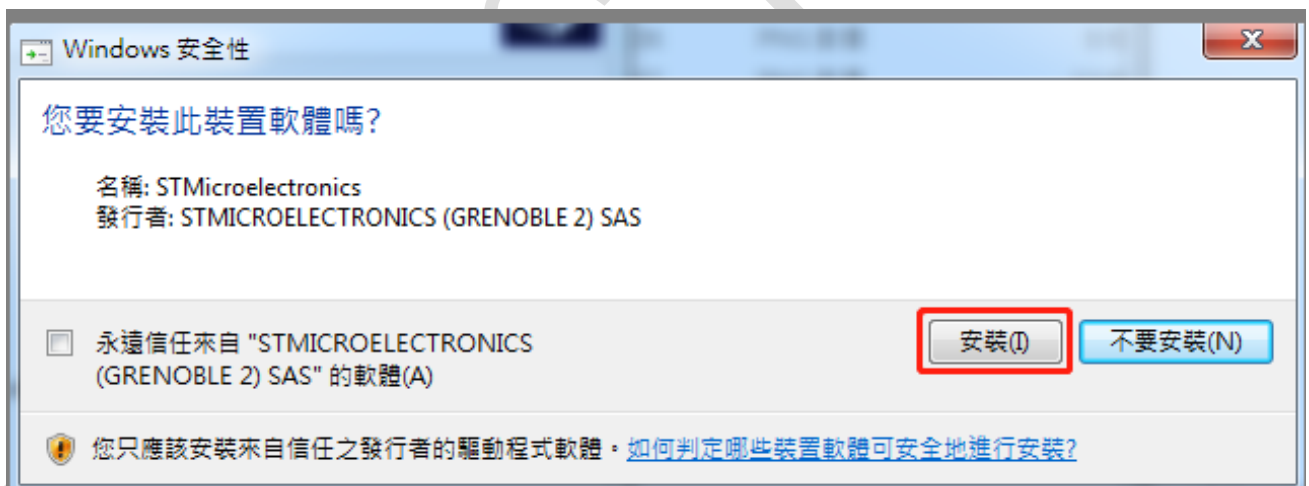
### 2.3 Click the next button



## 2.4 Waiting for the driver install.



## 2.5 Choose the install button to install STMicroelectronics.



## 2.6 Choose the install button to install STMicroelectronics COM port.

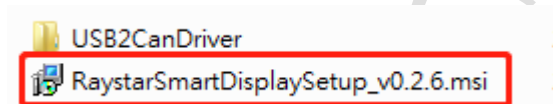




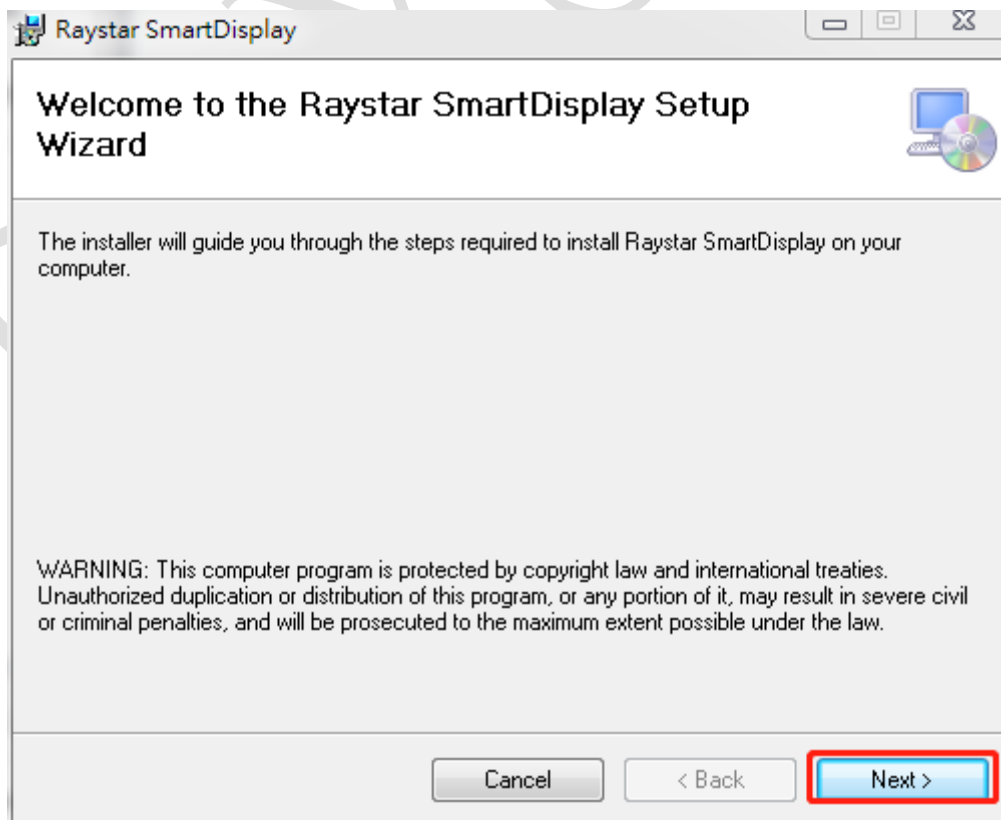
2.7 Completing the Driver installation wizard.



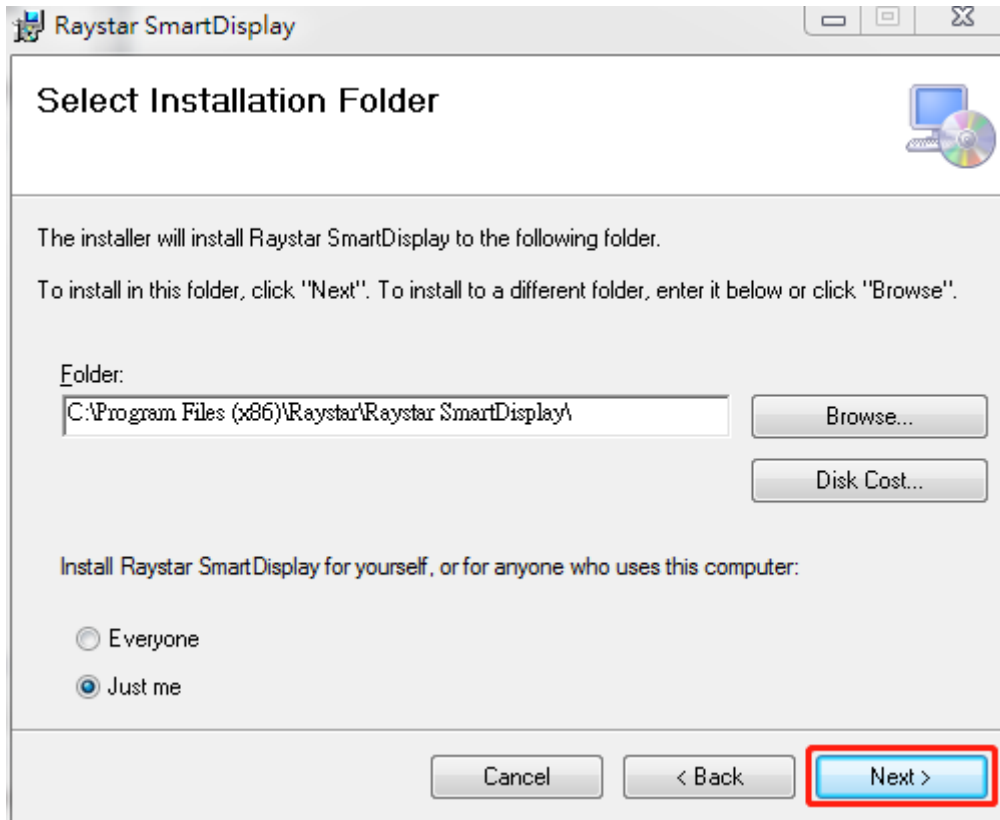
2.8 Installing control APP for PC that executes the 『RaystarSmartDisplaySetup.vx.x.x.msi』



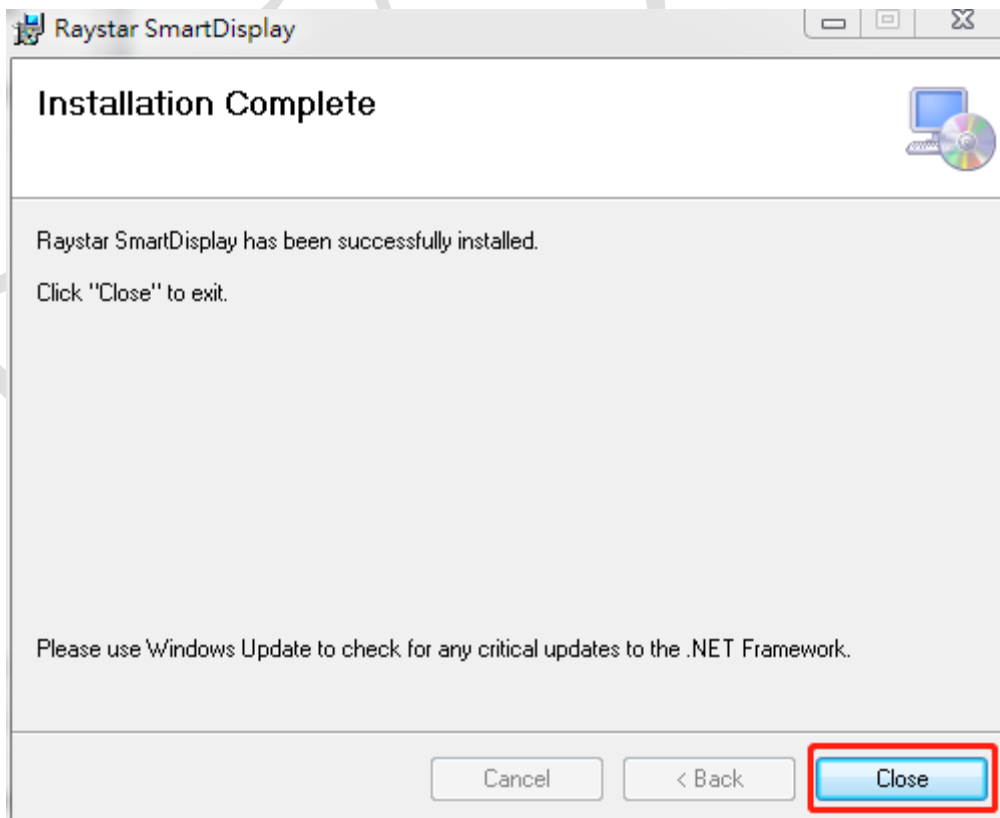
2.9 Choose the Next button to next install step.



2.10 Choose the Next button used the default installation folder.



2.11 Installation Complete.



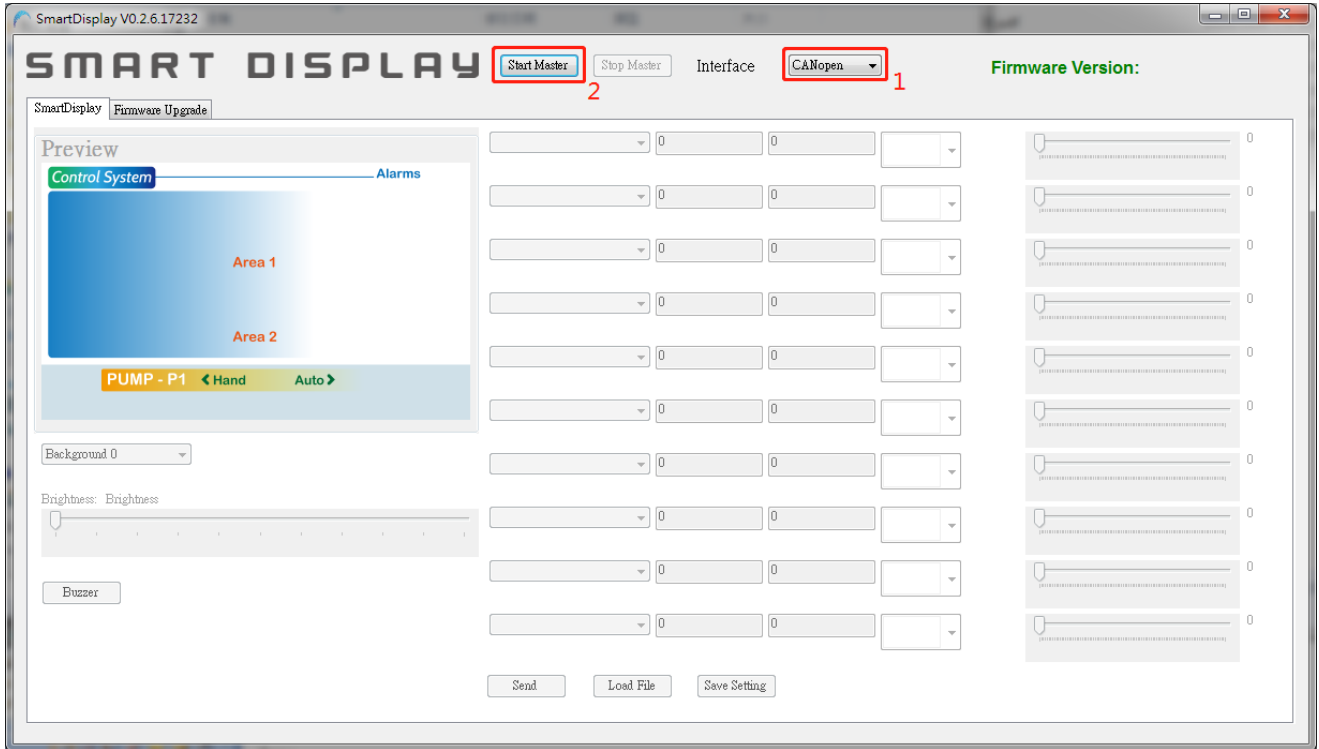
2.12 Then you can see the APP execution file on your desktop.



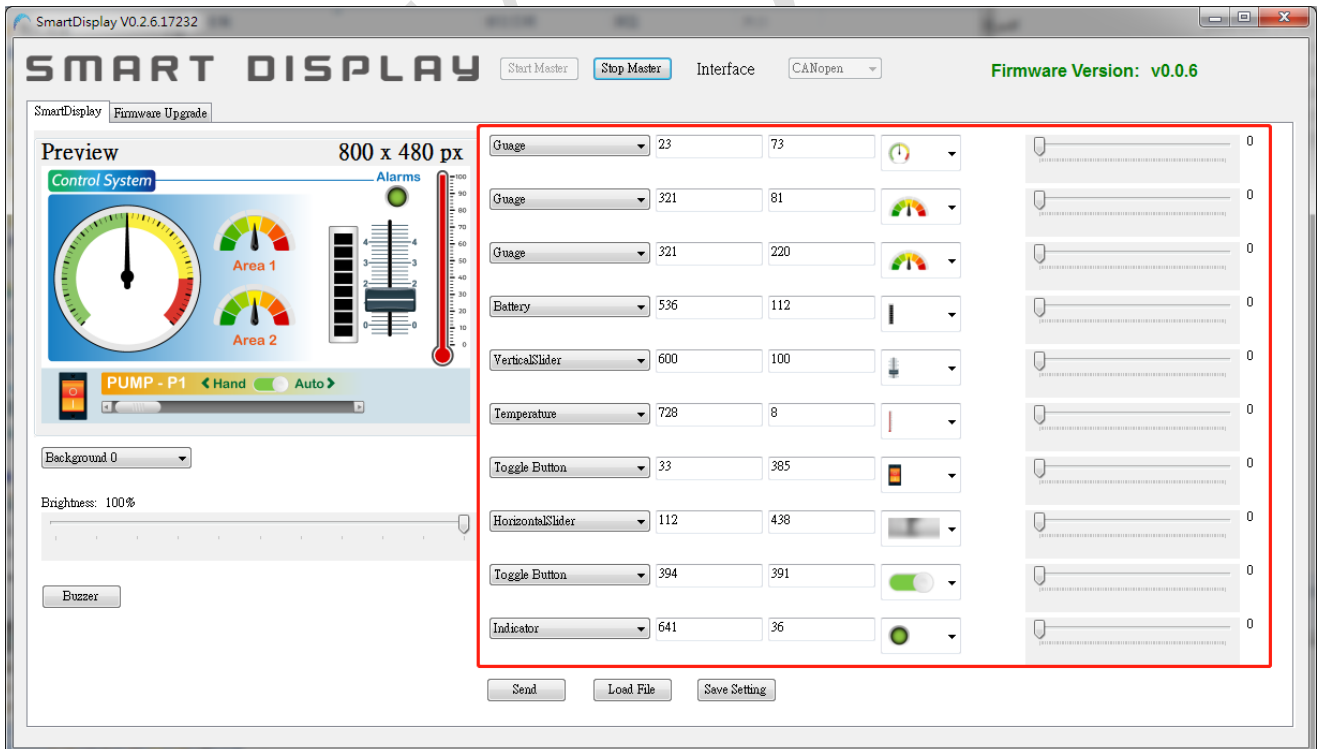
RAYSTAR

### 3 Operating the APP

Executing the APP choose Interface is CANopen or other interfaces if you have other interfaces. Then click the Start Master button to connect the device.



Then you can start to control our Smart Display.





RAYSTAR